

BRD 宝润达 冷库项目





目 录



冷库的建造要求和设计

Cold storage construction requirements and design



冷库的配套附件和设备

Accessories and equipment for cold storage



宝润达冷库产品和设计方案

Cold storage panels products and production



宝润达冷库项目赏析

BRD cold storage case

01

冷库的建造要求和设计

Cold storage construction requirements and design



预制板材搭建

Prefabricated sheet construction

One is with four-sided hook plate produced according to the length, width, and height, and choose the right thickness based on the need of the room, 10 cm for high and medium temperature cold rooms, while 12 cm or 15 cm for low-temperature and freezing cold rooms.



现场喷涂发泡

On-site spray foaming

the other is to spray the PU on the brick or concrete surface of the cold rooms and then foam, after shaped, It will be both moisture-proof and heat-insulated.

冷库板材对比

Cold storage plate comparison



Polystyrene is not water absorbed, and do well in heat insulation, and thermal insulation, excellent fire resistance, can reduce heat transfer due to the temperature difference between inside and outside, to achieve the maximum efficiency of the refrigeration system. It is currently the best-recognized building insulation material in the world and widely used in the building market. The trend of the modern cold storage is now changing into the more prefabricated cold rooms, pre-produced all the component with moisture-proof layer and a heat-insulating layer then on-site assembly, the advantage is that the Construction more convenient, fast, and movable.

冷库选址和设计

Cold storage site selection and design

The cold room should be built in the shade best, avoiding direct sunlight and high temperature occasions, small cold rooms are best built indoors. There should be good drainage conditions and low groundwater level around the cold storage. It's better to have a partition under the cold storage, and keep ventilated well. It's important to keep dry for the cold storage.

The storage capacity of the cold room should be designed according to the highest amount of products stored. This capacity should be calculated by the volume of the product to be stacked in plus the walking aisle, equal the capacity of the refrigerator, and then settle the length and width of the cold rooms.



02

冷库的配套附件和设备

Accessories and equipment for cold storage



附件和设备

安装过程中所需附件以及库内制冷通风运输设施

附件accessory

mushroom heads, connection, The tiger clip, lead screw
aluminum angle- used for the connection between wall and
wall, wall and roof,

Two kinds: external use angle and interior angle

Seal gum-- -used where panels connect with each other,
guarantee better air-tightness effect

U and L type color plate--- used where panel connect with
each other ,for decoration and better airtightness effect

设备equipment

Just sliding doors

Refrigerator

Air cooler

sliding doors

dock shelter

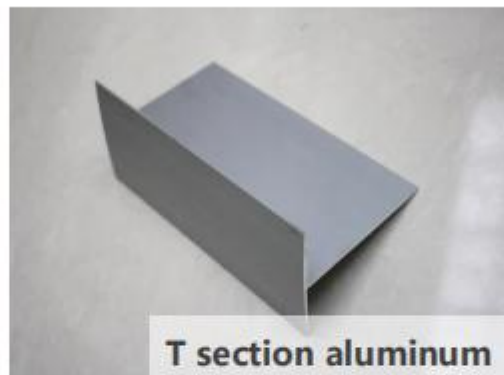
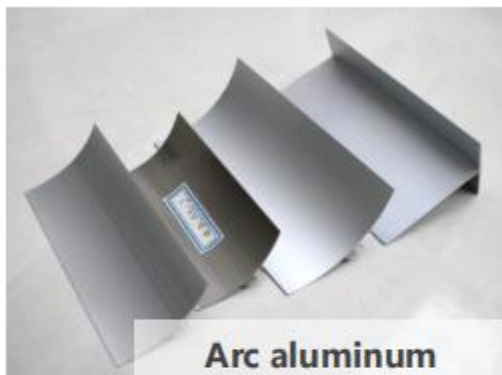
adjust table let

Forklift

shelf

附件accessory

辅助板材安装的材料



设备equipment

制冷以及运输设备

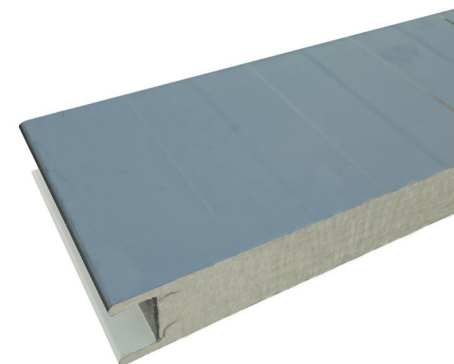
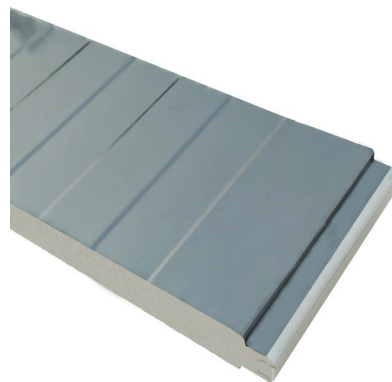


名称	1210川字型 承重 2T	数量	3
尺寸	1200×1000×150mm	重量	动载 1.5T 静载 5T 货层 0.8T



库体板材panels and doors

墙板和冷库门





制冷机的选择

Refrigerator selection

The selection of refrigeration system in cold storage is mainly decided by to the selection of compressor and evaporator in cold storage. Generally speaking, the closed compressor is the main choice for small cold storage. Because the power of fully enclosed compressor is small and the price is relatively cheap, the semi-enclosed compressor is generally used in medium-sized refrigeration storehouse, and the semi-enclosed compressor is used in large-scale refrigeration storehouse.

When selecting, the ammonia refrigeration compressor can also be considered, because the ammonia refrigeration compressor has high power and can be used in many ways, but the installation and management of the refrigeration storehouse is complicated.

03

宝润达冷库产品和生产

Cold storage panels products and production

宝润达产品介绍

product description



Our cold room panel systems are designed for use within temperature controlled and hygiene safe environments such as, food processing, deep freeze, cold, chill store and cold storage for meat and food industries.



Adopting electrostatic film laminating technology, the film can be adhered to metal sheet relying upon product electrostatic absorption, exerting protection role on the surface of metal sheet.

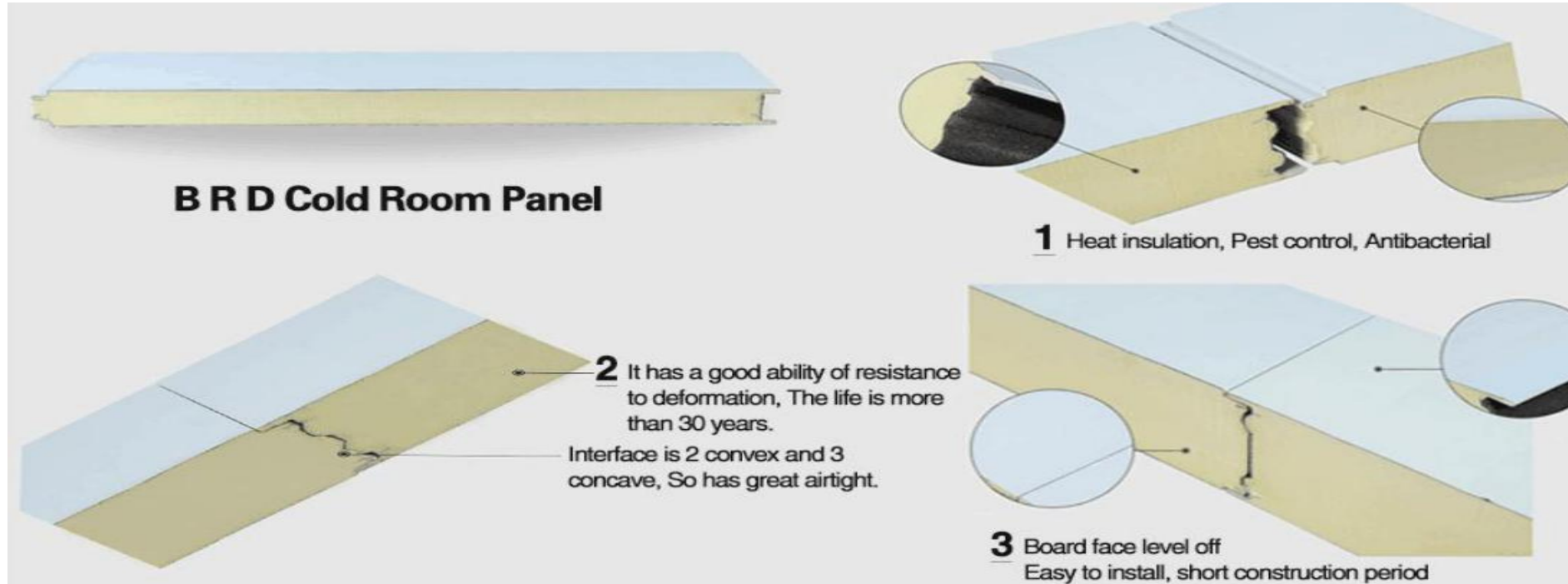
Due to the adoption of electrostatic film laminating (0.08mm) technology, it can prevent glue from leaving on steel sheet in the process of dyestripping that may result in dust absorption and unaesthetic phenomenon. (The raw material for film gluing is adopted with the sole formula of BRD)

生产工艺 Production Process



Our factory chooses the world's most advanced Italy's third generation equipment, the whole equipment costs more than 8,000,000USD. It is fully controlled by computer robot, without any manual operation. Even we want to produce unqualified products, which is impossible. The surface finishing can be controlled at 0.01 cm.

产品细节 product details



High quality, factory-engineered solutions, insulated panels provide fast, single-fix installation with guaranteed high thermal performance, 100% insulation continuity, zero moisture ingress and minimal air leakage.

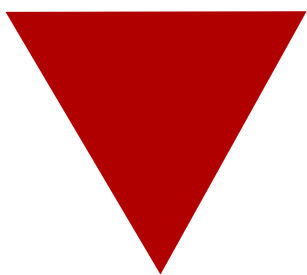
04

宝润达冷库案例赏析

BRD cold storage case



菲律宾冷库项目
Philippine Cold Storage Project



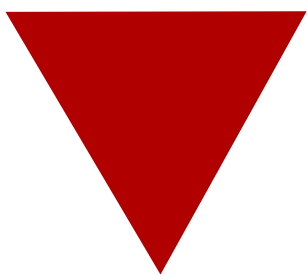
泰国冷库项目
Thai cold storage project



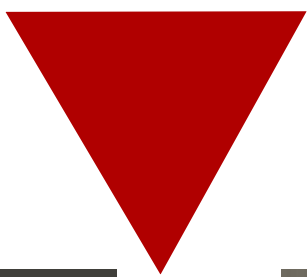
委内瑞拉冷库项目
Venezuelan cold storage project



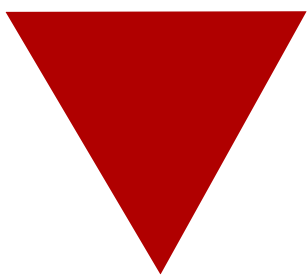
韩国冷库项目
Korean cold storage project



河内冷库项目
Hanoi Cold Storage Project



越南芽庄冷库项目
cold storage in Nha Trang, Vietnam



河南郑州冷库项目
cold storage in Henan zhengzhou



THANK YOU

the copy right belong to BRD ECO