

## BRD® Rock wool fireproof Board

### Application

BRD® Rock wool products are applicable for facade insulation, various curtain wall insulation of new buildings, reconstructed buildings, roofing insulation for various commercial buildings, industry workshop, and public buildings, interior decoration and partition insulation. The fire resistant rock wool products are used for fire blocking of various buildings. The rock wool well insulated buildings are much more energy efficiency, fire save and thermal, acoustic comfortable.



### The production process

Rock mineral wool panel insulation is made of select fine basalt as the major materials which is pulled into 4-7µm non-continuous fibers after melted ( at the temperature of 1450 °C (2642F) by adopting advanced international four-roller centrifugal cotton-making procedures, and adding a certain of adhesives, dust laying oil and water repellent into rock wool fibers. It can be made into products series with different density according to various uses through the technology of sedimentation.



### Feature

- ☑ Small coefficient of heat conductivity and good capability of heating preservation.
- ☑ Outstanding effect of energy-saving.
- ☑ Excellent fireproof capability. Excellent sound absorption and sound insulation capability.
- ☑ Green thermal insulation materials and no harm for body.
- ☑ high hydrophobic fate, low moisture absorption rate and low water absorption; excellent anti-humidity performance.
- ☑ The folded rock wool board with certain compression resistance has greater drawing strength, and it does not tend to peel off and has excellent improved durability.
- ☑ with a high acidity coefficient, can fight a variety of circulating climate and keep a stable system performance, and have the same life with the construction.
- ☑ the production can be arbitrary cutting and convenient for construction.

### Standard Specification

Product name	Rock wool board
Density (Kg/m <sup>3</sup> ) (11bs/ft <sup>3</sup> =16kg/m <sup>3</sup> )	60-200
Length (mm)	1200
Thickness(mm)	50-150
Width (mm)	600
Size(mm)	1200*600(50-150),

Other size and density may be available on request.



**BRD<sup>®</sup> Rock wool fireproof Board**
**Technical data sheet**

Item	Unit	Density(Kg/m <sup>3</sup> )(11bs/ft <sup>3</sup> =16kg/m <sup>3</sup> )	
		50-90	100-150
Combustion Performance	-	Class A1 non-combustion	
Compression Strength(10% deformation)	K pa	≥40	
Hydrophobic rate	%	≥98.0	
Melt temperature	°C	>1000	
Acidity ratio	--	≥1.8	
Moisture absorption	%	≤1.0	
Thermal Conductivity (Average25°C)	W/(m*k)	0.034-0.036	0.036-0.040
Dimensional stability	%	≤1.0	
Water absorption (Partial Immersion)	Kg/m <sup>3</sup>	Short term (24h)≤1.0	
		Long term (28d)≤3.0	
Thickness tolerance	mm	±2	±3
Right angel degree of deviation	Mm/m	≤5	
Paleness Tolerance	mm	≤6	
Property after Ignition burning	Shrinkage Percentage	%	(750°C, 0.5h) ≤8
	Mass loss rate	%	(750°C, 0.5h) ≤10



## BRD<sup>®</sup> Rock wool fireproof Board

### Packages

The board is packed in white or yellow color PE bag, 6-8 pieces in one PE bag for moisture proof.



### Production Application

#### No1. Rock wool board External Wall insulation solution

**Description:** The con-structure makes the rock wool board as the core, is non-bearing fixed on the external Wall.

**Application:** It is used for energy saving of insulation for new building and building reform It uses for frame structure, masonry structure etc. The extra advantage of low density and high strength is prominent when the rock wool uses in the high building or super high building, meeting the requirement of pressure to keep safe.

**Feature:**

1. High pressure and tensile strength.
2. Small size, light weight, easily installation.
3. Grade A fireproof, Without being limited by the building height on insulation thermal material fireproof grade.
4. Rock wool insulation layer has good air permeability.
5. Good compatibility.
6. High hydrophobicity, low water absorption, good size stability to keep long life.



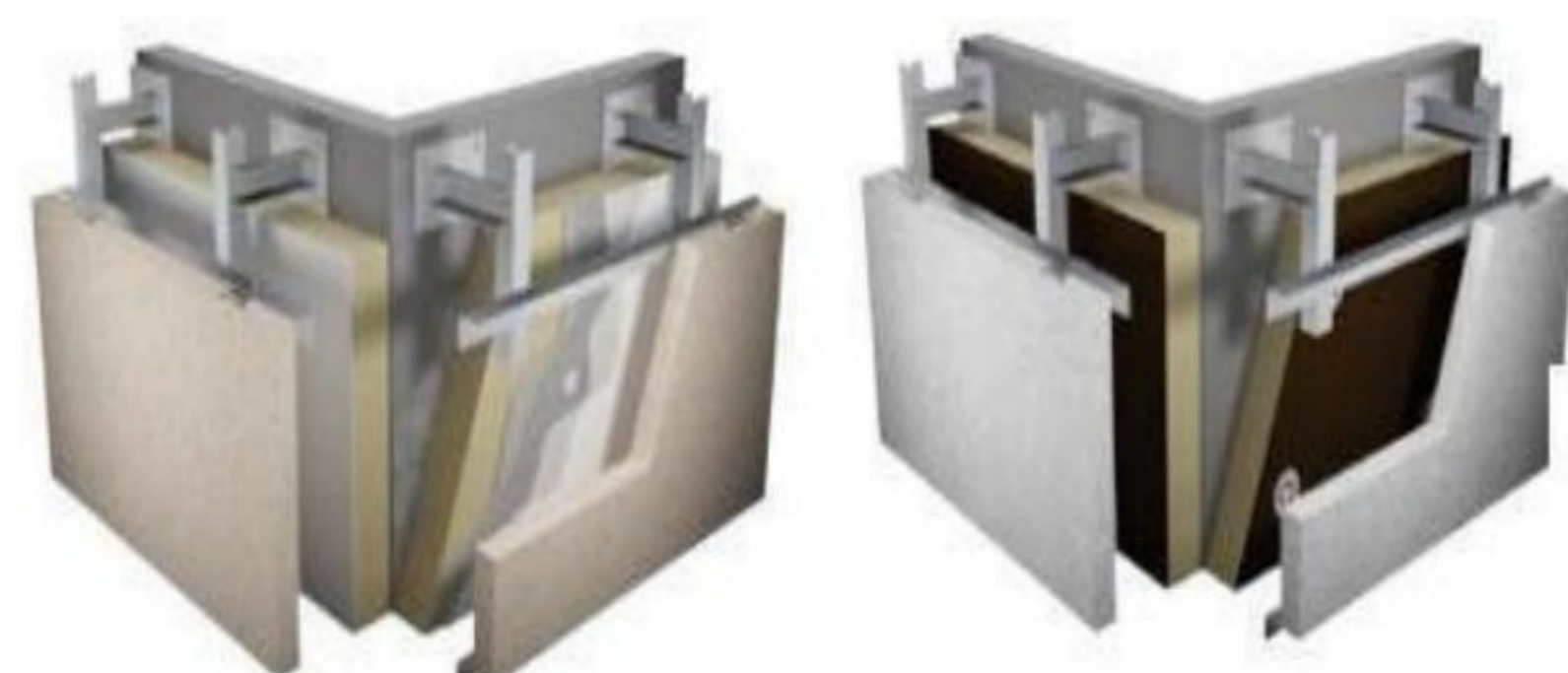
#### No2. Dry hanging ventilating curtain wall insulation solution

**Description:** This construction means making the compact structure of concrete or brick etc to be as the foundation wall, dry curtain wall or nontransparent curtain wall to be as the facade, using the rock wool between the foundation wall and the facade to be as the insulation thermal layer.

**Applications:** Using for external wall insulation of the new building and the reform building

**Features:**

1. Good insulation thermal effect to save energy.
2. Grade A fireproof.
3. Sound-absorbing noise reduction and shock absorption.
4. high compression resistance and tensile strength.
5. High hydrophobic rate, low water absorption, size stability good to keep a long life.
6. Non corrosion for metal material and components.
7. Good air permeability.





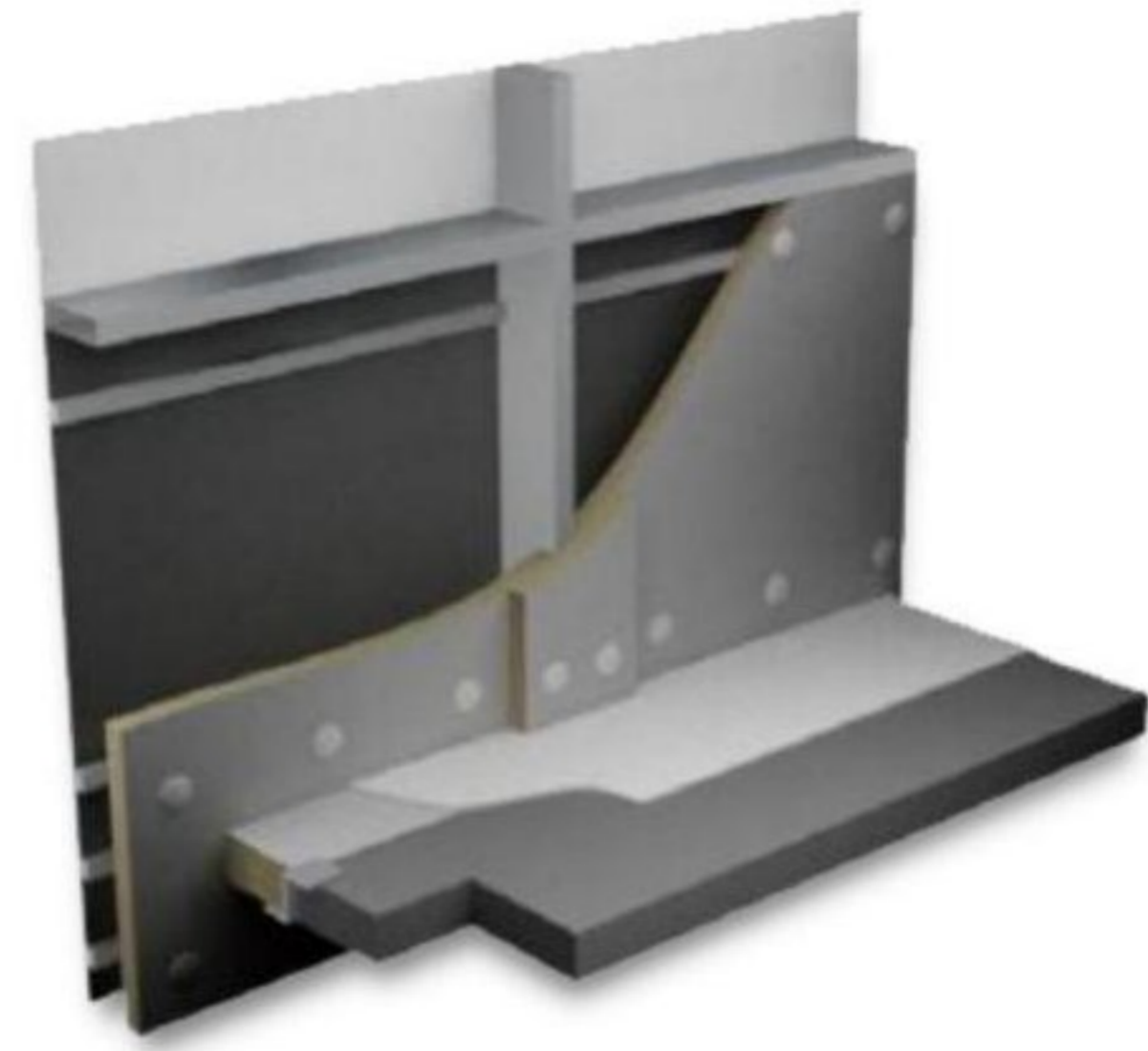
### **No3. curtain wall fire insulation solution**

#### **Description:**

Curtain wall fire insulation system including curtain wall fire blocking and curtain wall window wall and the window wall of the fire insulation.

#### **Features:**

- ☑ Excellent fire resistance, up to 2 hours of fire-resistant limit.
- ☑ Long and stable thermal insulation performance
- ☑ Sound-absorbing reduce noise and eliminate elastic vibration.
- ☑ Not rotting moldy, non-corrosive metal components
- ☑ Environment friendly, have an advantage in get LEED project.



#### **No4. Other Applications:**

The gap fire blocking between curtain wall and floor, as well as the fireproof and insulation between window sill wall and window wall , fire proof door, etc



## About BRD New Materials Co.,Ltd

# BRD New Materials Co., Ltd



BRDECO Group, established in 1995 and covering more than 30 million M2 area, is a modern enterprise specialized in full system of steel building, such as PU/rockwool Sandwich panel, thermal insulation and decorative panel, steel truss deck, etc.

BRDECO also has a strong productivity. We have more than 500 existing staffs. We have introduced several Italian fully automatic production lines and Chinese total productive management system.

The annual output includes 1.2 million meters of polyurethane sandwich. We have taken part in many famous exhibitions, such as Canton Fair, Thailand ASEAN International Exhibition and so on. We sincerely looking forward to having a win-win cooperation with you.



We promise the long service life quality assurance. And we will always extends the service life of panels. The distributor covers more than 21 cities in the world. BRD Group export sales net has covered over 35 countries and regions, such as America, United - Kingdom, Canada, Russia, Peru, Vietnam, Trinidad and Tobago, Australia, Sweden, and some other countries in Europe, Southeast Asia ,South Africa and other places.



**BRD New Materials Co., Ltd**  
Tel: +86 186 3816 6935  
Email: [leslie@bundesteel.com](mailto:leslie@bundesteel.com)  
Website: [www.brdecogroup.com](http://www.brdecogroup.com)